

Education transactions.

Our experience in the
Education sector



Are you considering...

- Acquiring or selling?
- Merging schools?
- Bolting on a new division?
- Joint venture arrangements?
- Franchising overseas?
- Investing in the Early Years, K12, FE or HE sectors?

Why choose VWV?

Our USP is our total immersion in and commitment to the education sector, so we have a complete understanding of the commercial significance of the deals that we work on and the regulatory environment which applies.

Our award winning Education Transactions team advises on more education sector transactions than any other law firm. That experience and expertise means that we are well-placed to work with you to ensure that your transaction completes successfully.

For a confidential conversation, please contact Robert Collier on 07769 696 075 or Barney Northover on 07973 423 081





Recent deals (2024/25).

Client	Project
Forfar Education	Acquisition of St. Helen's College
St. Alban's High School for Girls	Merger with Stormont School
Proprietors of Finborough School	Sale to Forfar Education
Ardingly College	Merger with Great Walstead
Durham Education Limited (Galaxy Global Education)	Acquisition of Durham High School for Girls
Ardingly Projects Limited	Acquisition of Ardingly Activity Centre
West Hill Park School	Merger with the Prep Schools Trust
Red Maids School	Merger with GDST
Malvern Education Limited (Galaxy Global Education)	Acquisition of Malvern St. James
St. Dunstan's	Merger with Christopher Hall School
Stowe School	Merger with Ashfold School
Millfield	Acquisition of Dolphins Childcare Centre
Outcomes First Group	Acquisition of Oxford Montessori School Limited
Durham Education Limited (Galaxy Global Education)	Acquisition of Plymouth College

Client	Project
Sevenoaks School	Merger with Solefield Prep School
St. Christopher's School and Nursery	Merger with Reigate Grammar School
Chafyn Grove School	Merger with United Learning
Dean Close School	Acquisition of Polly's Nurseries
Rugby School	Merger with Aysgarth School
Heathfield School	Merger with Mill Hill
Westbrook Hay	Merger with Mill Hill
Charterhouse	Merger with Windlesham House School
Kingham Hill Trust	Merger with Dean Close Foundation
Winchester College	Merger with Pilgrims' School
Clayesmore School	Sale to Inspired Learning Group
Shrewsbury School	Merger with Terra Nova
Prince's Mead School	Merger with King Edward's VI, Southampton
Lancing College	Merger with Dorset House
Hoe Bridge	Merger with Greenfields School
Lochinver House School	Merger with Haberdashers' Elstree
Sherborne Girls School	Merger with Sherborne School



Matters completed earlier.

Mergers, acquisitions and disposals. Acting for:

St Petroc's School in relation to its sale to Oxford Education group

Charterhouse in relation to its merger with Edgeborough School

The proprietors of Chiswick & Bedford Park School in relation to its sale to Dukes Education

St David's, Purley in relation to their merger with The Russell School

King's Ely in relation to their merger with Fairstead House School

King's Bruton in relation to their merger with Bruton Girls School

The proprietor of The Kindergartens on the sale of the business to Dukes Education

Rugby School in relation to its merger with Bilton Grange

The proprietors of Broadway Education on the disposal of St. Michael's School and Bosworth Independent College to Bright Scholar

The governors of Collingwood School in relation to its sale to Inspired Learning Group

Inspired Education (as co-counsel) in relation to its acquisition of My Online Schooling

Clifton College in relation to its acquisition of the English Language Centre

Vinehall in relation to their merger with Repton School

Bellevue Education and its shareholder group in relation to its sale to GEMS

Exeter School in relation to its acquisition of New School, Exeter

Shrewsbury School in relation to its merger with Packwood Haugh School

The Red Maids' School on its merger with Redland High School for Girls

Monkton Combe School in relation to their merger with All Hallows School

Warlingham Park School on its sale to Inspired Learning Group

Ruthin School in relation to its sale to Ruthin Education Limited

New Beacon School in relation to its merger with Tonbridge School

Harvington Preparatory School in relation to its merger with Durston House

Moreton Hall School in relation to its sale to YC Education/Ascend International Education Group

Wychwood School in relation to its joint venture with E3 Capital

The proprietors of Fulham Prep School on its sale to Educas/Reddam House

The Park School in relation to the sale of The Park School for Girls, Ilford (closed site)

Concept Education in relation to its acquisition of The Marist School

THI Investments in relation to the embedded college section of Oxford International and the Corndel apprenticeship business



Matters completed earlier.

Mergers, acquisitions and disposals. Acting for:

Harvington School in relation to their merger with Durston School

Lyonsdown School in relation to their merger with Mill Hill

United Learning in relation to its merger with The Royal School, Haslemere

St Francis College in relation to its sale to Inspired Learning Group

Wisbech Grammar School on its sale to an overseas investor

The proprietors of Broomfield House School in relation to its sale to Dukes Education

Durham Cathedral Choir School in relation to its merger with Durham School

Stowe School in relation to the three-way merger with Winchester House and Swanbourne House

Coworth-Flexlands School in relation to its merger with United Learning

Thetford Grammar School Foundation in relation to the sale of Thetford Grammar School to Access (UK) Education Group

Bradfield College in relation to its merger with St. Andrew's School

Cobham Hall in relation to its merger with Mill Hill

Abbotts Hill School in relation to its merger with Mill Hill

Beeston Hall School in relation to its merger with the Prep Schools Trust

Blackheath Prep in relation to its merger with Eltham College

Clifton College in relation to its merger with Tockington Manor School

Derby Grammar School in relation to its sale to Inspired Learning Group

Education in Motion in relation to its acquisition of Sherfield School (from GEMS)

Francis Holland School in relation to its acquisition of the Hampshire School (from GEMS)

Globeducate (acting as co-counsel) in relation to the acquisition of Boundary Oak (from Quo Vadis)

Kingshott School in relation to its merger with Mill Hill School

Manor House School, Little Bookham in relation to its merger with Effingham Schools Trust

Micklefield School in relation to its merger with Reigate Grammar School

Prebendal School in relation to its sale to Alpha Schools

Rookwood School in relation to its sale to Inspired Learning Group

Rupert House School in relation to its sale to Wishford Schools Group



Matters completed earlier.

Mergers, acquisitions and disposals. Acting for:

Sherborne Girls School in relation to its merger with Hanford School

St Albans High School for Girls in relation to its merger with Stormont School

St Andrew's School, Woking in relation to its merger with Halstead School

St Joseph's-in-the-Park in relation to its merger with Mill Hill School

Sunninghill Prep School in relation to its sale to Inspired Learning Group

Survai Education Limited in relation to its acquisition of Webber Independent School (from GEMS)

United Learning in relation to the sale of Princess Helena College (closed site)

Werton Group Ltd in relation to its acquisition of Woodside Gan Nursery



International projects.

Providing advice on the following projects:

Charterhouse International Limited in Nigeria

Rugby School International Limited in Japan and Thailand

Ellesmere College International Limited in Oman

Kings School, Canterbury (International) in Cambodia and China

Cranleigh Education Services Limited in Abu Dhabi, China and Bahrain

Sherborne Schools Worldwide Limited in the MENA Region. Including: Algeria, Bahrain, Djibouti, Egypt, Ethiopia, Iran, Iraq, Israel, Jordan, Kuwait, Lebanon, Libya, Malta, Morocco, Oman, Palestine, Saudi Arabia, Syria, Tunisia, Turkey, the United Arab Emirates and Yemen

Malvern College International Limited in China, Japan and Switzerland

Shrewsbury School in relation to Bangkok, City Campus and Shrewsbury School Huangpu, Guangzhou

The Perse School Cambridge International Limited in Singapore and Oman

King's College School, Wimbledon in relation to projects in Wuxi and elsewhere in China

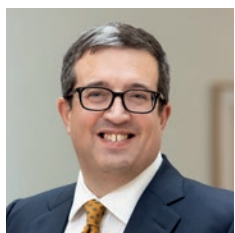
Plus confidential deals in:

USA • Canada • Kazakhstan • India • UAE • Vietnam • Mexico • Nigeria • Egypt • Oman • South Korea • Saudi Arabia • Thailand • Sri Lanka



Meet the team.

Transactions



Robert Collier
Partner
07769 696 075
rcollier@vwv.co.uk



Barney Northover
Partner
07973 423 081
bnorthover@vwv.co.uk



Siân Champkin
Partner
07810 497 162
schampkin@vwv.co.uk



Samantha Chaney
Partner
07823 880 749
schaney@vwv.co.uk



Simon Linnitt
Partner
07718 384 826
slinnitt@vwv.co.uk



John Deakin
Partner
07718 384 962
jdeakin@vwv.co.uk



Naseem Nabi
Partner
07500 702 450
nnabi@vwv.co.uk



Sarah Outram
Partner
07468 698 967
soutram@vwv.co.uk



Mark Stevens
Legal Director
07909 681 036
mstevens@vwv.co.uk



Aderonke Fashade
Senior Associate
07384 256 176
afashade@vwv.co.uk

Meet the team.

International



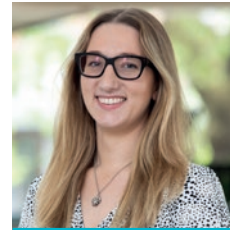
Doug Locke
Partner
07951 093 356
dlocke@vww.co.uk



Paula Williams
Partner
0117 314 5616
pwilliams@vww.co.uk



Stephanie Pike
Senior Associate
07384 810 973
spike@vww.co.uk



Tara Ffrench
Associate
07500 110 643
tffrench@vww.co.uk

Testimonials.

We are focussed on meeting and exceeding our clients' expectations.

Clients and directories (Chambers & Partners & Legal 500)



VWV offer a unique combination of experience, expertise, approachability, attention to detail, judgement, ability to listen and provision of clear advice.

The lawyers at VWV are very responsive, knowledgeable and commercially-focussed.

The team are recognised as leaders in the education field and have the relevant knowledge and experience to handle all matters.

VWV's education team are commercially astute and keep up to speed with trends and moves in the independent school sector - they are therefore able to provide relevant and up-to-date advice to clients.

They understand the context and have the ability to drill down to get the information required to give very sound advice. All aspects are considered so you would be aware of any dangers or impacts of actions.

With VWV, it genuinely did feel as though we had the very strongest of teams on our side, and this served to generate a great deal of comfort and confidence.

The support we received from VWV was absolutely outstanding. It was clear, precise and helped to cut through the issues.

The client service provided by VWV was professional and honest. Their transparency and integrity in dealing with us were particularly impressive.

VWV has a highly respected education team with considerable expertise in sensitive matters, including safeguarding issues. The team regularly provides advice on a range of complex issues faced by independent schools.

VWV provided great bespoke advice, informed by wider sector knowledge.

They have the expertise and capacity to deal with anything we ask. Their knowledge and experience of the education sector has been invaluable.

Testimonials.

We are focussed on meeting and exceeding our clients' expectations.

Clients and directories (Chambers & Partners & Legal 500)



The VWV team is knowledgeable and approachable. They are clear in their advice and understand the client's perspective, and are able to offer pragmatic solutions as well as the purely legal view.

The team draws on the strengths and knowledge of their lawyers to ensure that solutions are approached from a 360-degree angle. Responses from VWV are not only speedy but also accurate and detailed.

Throughout the entire workforce, VWV provides ridiculously high standards in terms of its efficiency.

VWV go the extra mile to liaise and provide a value-for-money service. They're in tune with the current market and can make sense of complex commercial issues.

VWV's team has a broad range of experience, which means that we are confident that any legal query will be dealt with by someone with an understanding of the education sector.

We appreciate the ability of the VWV team to explain complex and legal interpretations. They always respond in a timely manner and rapidly with urgent matters.

They delivered a strong performance and a personalised and sensitive approach, showing a thorough understanding of schools.

A team who 'positively fizz' with enthusiasm and good sense.

The education team at VWV stands out for its strategic and operational expertise and is widely considered a 'market leader' in the independent schools sector'. The team is trusted to assist with high-value projects, including major school acquisitions and sales.

An all-round service that is hard to beat.

VWV is quick to respond and finds the right individual with the skills to advise. I always receive straightforward, unbiased advice which clearly sets out any risks.

